



Prospectus

# WELCOME

**Having benefited greatly myself from the opportunities a university education creates, I wish to congratulate you on taking the next step on your journey to a better future.**

It's a major commitment you are making, and it will require some hard work if you are to fulfil your ambitions. But that is to be expected when you're about to change the future direction of your life.

My advice to you is to imagine exactly what you want to achieve and specifically how it will benefit you and those around you. Then regularly remind yourself of these goals and this will help motivate you through the tough times when studying.

At Arden we believe everyone has a right to higher education and we're here to help you to succeed at every step of the way.

So please contact us - we are here to help you overcome any hurdles that are preventing you from taking the next step. Do this today, and I will look forward to congratulating you on your success at your graduation!

**Dr Philip Hallam**

Vice-Chancellor & Chief Executive Officer  
Arden University

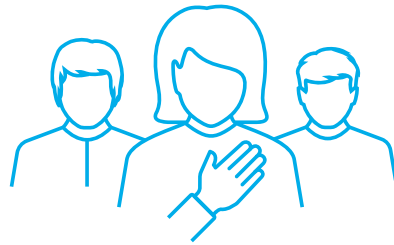


# OUR VALUES



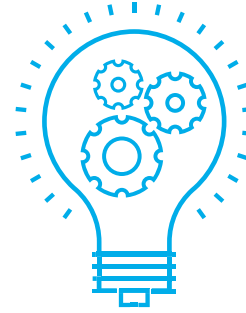
## WE SUPPORT PEOPLE

Together, we create a nurturing environment for our students and employees. We care about people and the positive difference we can make to their lives.



## WE DO THE RIGHT THING

Integrity is at the heart of everything that we do – that means we are completely honest and never compromise on quality.



## WE INNOVATE

We value open-mindedness, dynamism and the ability to think differently. We will always drive for progress, improvement and new ways to do things.



## WE TAKE OWNERSHIP

By each committing to contribute our best, we will achieve our ambitions and together excel in our performance.



# CONTENTS

Our Story	5 - 6
Your Learning Experience	7 - 10
Your Support	11 - 14
Ways to Study	15 - 20
In the Words of Our Students	21 - 24
Your Course Essentials	25 - 35





# OUR STORY



# OUR STORY

**We believe that everyone, everywhere has a right to higher education. It's a path that leads to both personal progress and enrichment.**

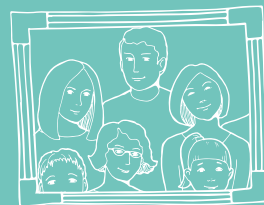
For some though, there are hurdles along the way – whether it's geographical constraints, financial concerns, family commitments or just not quite believing you can do it.

Our ambition is to make higher education more accessible, engaging and beneficial to people everywhere, and our unique, flexible online and face-to-face study programmes together with supportive learning experience make us a pioneer in Higher Education.

We offer a range of courses accredited by professional bodies, such as the Chartered Institute of Marketing, the British Psychological Society and Association of Chartered Certified Accountants to name a few.

• • • • •  
• **Many things have changed, but our core values remain the same: to provide wide access to education and change people's lives through innovative, modern learning.** • •  
• • • • •

FROM THE BEGINNING



**Arden University started life in 1990 as Resource Development International (RDI)**

a family-owned business, giving learners worldwide an opportunity to further their education through flexible distance learning.



**In April 2014 we were awarded Taught Degree Awarding Powers (TDAP)**

this meant we could award our own degrees alongside continuing to offer courses awarded by our partner universities.



**In August 2015 we officially became Arden University**

the only specialist online learning university to launch in the UK in the last 50 years.



**In September 2016 our first study centre opened**

and we now have five study centres across the UK, where students combine the flexibility of online learning with face-to-face sessions.





# YOUR LEARNING EXPERIENCE



# FLEXIBILITY

Flexibility can mean a lot of things. But for Arden students it means you can:

- Study any time of the day – with access to your course materials online 24/7
- Access your online space on the technology you have to hand - mobile, tablet, laptop or computer
- Choose how you want to pay - self-funded, student loan or employer sponsorship
- Set your own pace for online only learning – releasing modules as you go

Need more structure? Choose our blended learning option, a combination of online and face-to-face study at one of our UK study centres.

# 24/7

Study any time of day

# 90%

of students work  
alongside their study

LEARN  
WHENEVER  
AND  
WHEREVER



# CAREER FOCUS

All our courses have been designed with your career in mind. Many modules offer scenario-based study and built-in professional development that will give you a suite of transferable skills that can be applied to a range of industries and roles.

We also have a content-rich careers portal to give you a wealth of general skills and knowledge that can help you get the most out of your career.

DISCOVER HIGHER EDUCATION THAT'S   
**BUILT  
AROUND  
← YOU**



# MODERN LEARNING

There has been a lot of research into what learners need to **succeed in their studies, and this is the foundation on which we have built our curriculum and courses.**

Alongside traditional texts, we use podcasts, webinars (online seminars) and interactive knowledge-checks to keep you engaged, focused and motivated.

To make sure our learners can access all of these up-to-date learning tools, whenever they need to, we've put them all in one, online place – **ilearn**.

## Introducing ilearn – Your Virtual Classroom

# ILEARN

is like an online classroom with your library, diary and lecture theatre all rolled into one. It contains:



## ALL

of your modules including online induction, core study materials and schedules



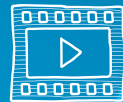
## ACCESS

to our online library with thousands of e-books and e-journals



## FORUMS

to interact with fellow students and tutors



## CAREERS

portal with access to rich and interactive content

Many of our modules can be easily downloaded so you can add comments, highlight key points and write notes, even in places where internet connection is sparse.

As our distance learning seminars have been recorded, you can access them when it's convenient for you. The always-on virtual classroom is there to help you progress your learning and work through assignments whenever and wherever it suits you.

**YOUR  
SUPPORT**



# OUR PEOPLE

**At Arden we want every student, no matter what their background or situation, to be able to enjoy their study and to achieve their goals. From application to graduation, you will have a network of people there to support you every step of the way.**



## Admissions

When you first enquire about studying with us, you'll speak to one of our friendly admissions advisors.

They'll help you consider the options available to you and explain how studying with us can fit around your life.

If you want to find out more about Arden, our courses, how they are taught, entry requirements, or fees and funding, then this team will be able to help.

Our dedicated team are here to help you choose the right course for you and to guide you through the application process – feel free to give them a call and they'd be happy to help!







“Whether you are considering studying with us, want to know which courses you are eligible for or how the student loan process works, or even just want to find out more about Arden, we are here to help. We will support you through the entire application process, helping you complete your application and guiding you through the enrolment and fee payment stage.”

Emma Lanaghan, Head of Admissions

Call us today: 0800 268 7737  
or +44 (0) 2476 515 700

Email: [enquiries@arden.ac.uk](mailto:enquiries@arden.ac.uk)

# OUR PEOPLE

## Academics

The academic team is an essential part of any university course. At Arden we have a great team to guide you through your study.

You will get to know them during your course, either through the online live seminars and tutorials on ilearn, or through face-to-face learning at one of our study centres. If you have a question outside of class or want feedback on an assignment, your tutor is available to contact directly via email, phone or Skype.

**“...Our tutors go through a rigorous selection process and have the knowledge, experience and commitment to not only help you through your course, but to support you in understanding the subject and developing skills to support your future career”**

John Vaughan, Academic Director

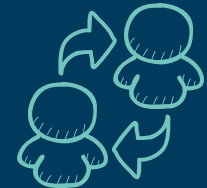
## Student Support

Understanding, approachable and ready to help, our Student Support team at Arden are committed to helping you manage your course. You'll have a personal student support co-ordinator to support you with your course progress, who will be your key contact for things like:

- Managing your time
- Accessing study materials
- Submitting your assignment

**“We're with you every step of the way throughout your learning journey, offering support, guidance and encouragement. Celebrating our students' success at graduation and seeing them take another step toward achieving their dreams is the reason we love what we do.”**

Sian Duffin, Student Support Manager



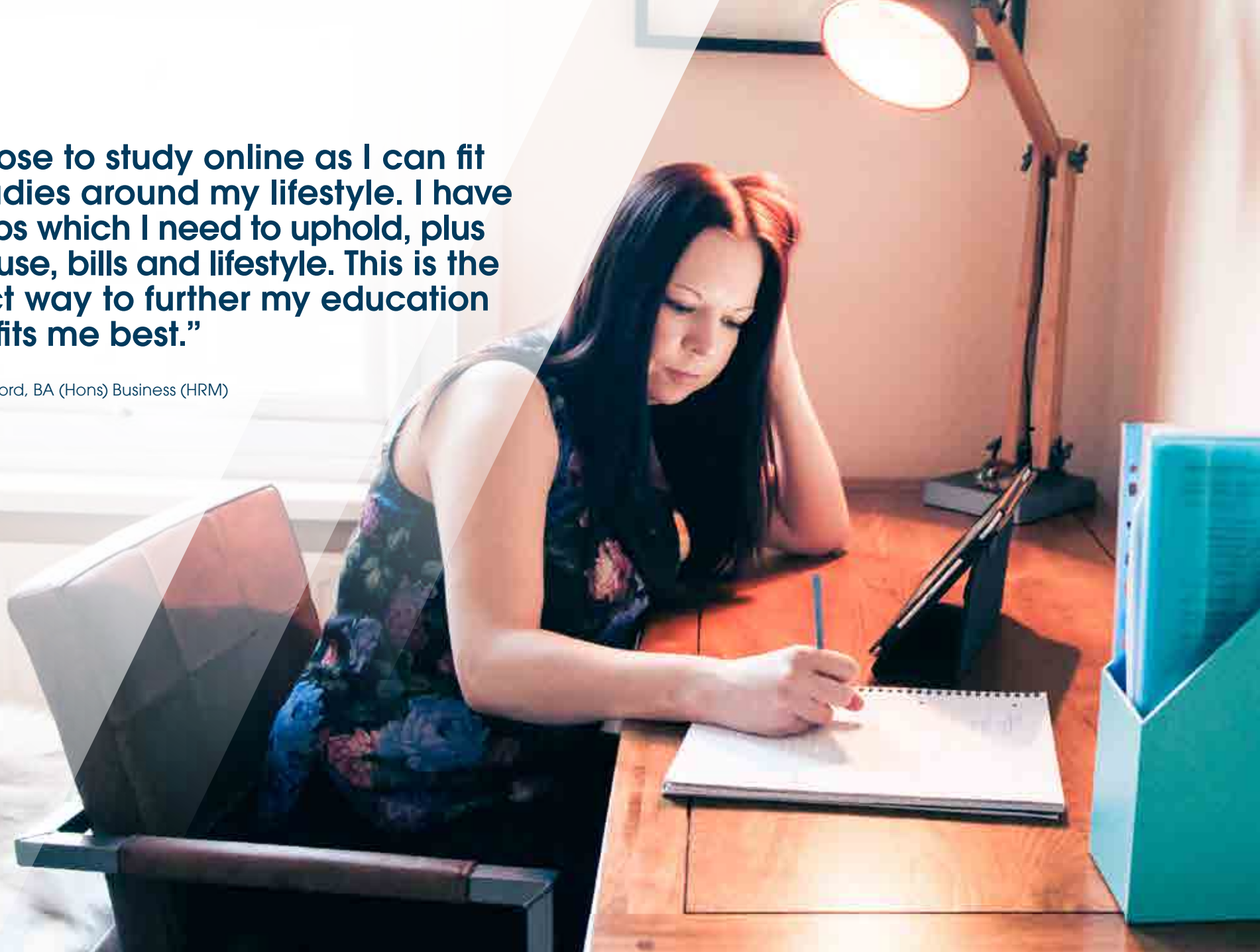
# WAYS TO STUDY





**“I choose to study online as I can fit my studies around my lifestyle. I have two jobs which I need to uphold, plus my house, bills and lifestyle. This is the perfect way to further my education when fits me best.”**

Emma Blackford, BA (Hons) Business (HRM)





# DISTANCE LEARNING

## Leaves you free as a bird

In today's busy world you can't always adjust your schedule to free up big chunks of time. We understand this.

Our online learning is a flexible way to study for a university awarded, internationally recognised qualification. Our degree, Masters and MBA courses are of equal value to on-campus, traditional programmes – the only difference is the flexible way the course is studied.

Perhaps you have begun your career and are looking to take the next step, or you're a school leaver wanting to study a qualification alongside getting that all-important work experience. Studying 100% online is perfect as it lets you study anywhere, at any time, as long as you have access to an internet connection.

With access to your materials 24/7 through our online study portal ilearn, you can study at a pace convenient for you and fit your studies around your life.

## Want all this but need a little more structure?

You got it! If you need a timetable to stick to but don't want to be in and out of lectures all week then our compressed blended learning might be for you if you're a UK student.

We have UK study centres in Birmingham, Manchester and across London, offering full-time degrees, Masters and MBAs in part-time campus hours.

You can complete a full three-year degree with just two days face-to-face classes per week. Or study for your MBA or Masters with just one evening session every two weeks in a classroom. All of this is combined with the same great online materials and support our distance learning students receive.

Find out more about blended learning on the next page.

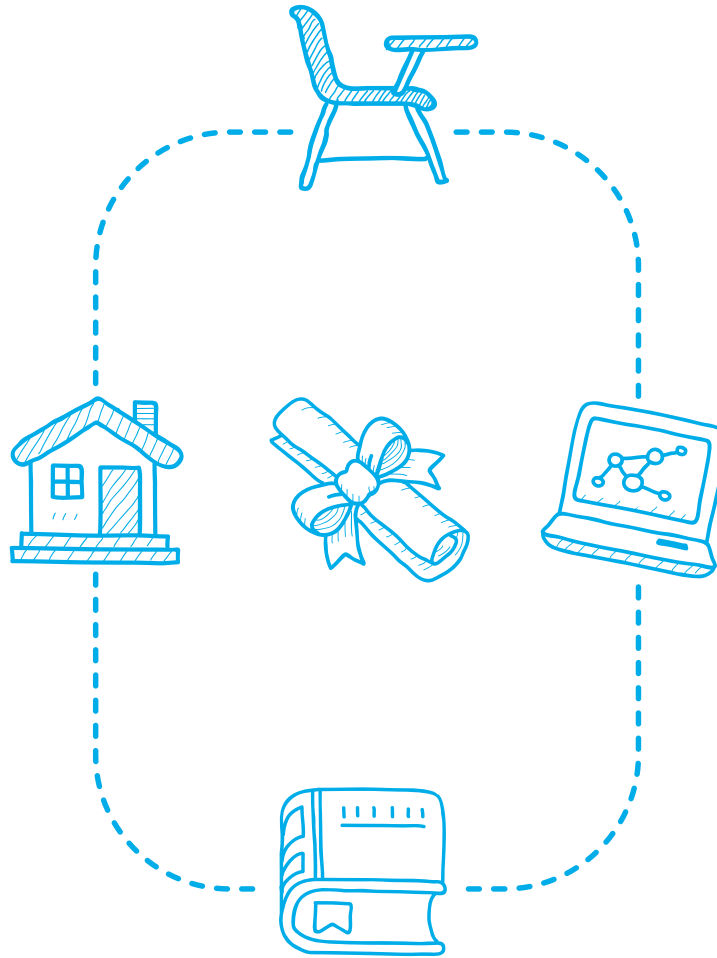


# BLENDED LEARNING

Blended learning\* combines classroom study with flexible online learning, making it ideal for students who want the traditional on-campus learning experience, without the full-time commitment.

You'll have face-to-face time with your peers and tutors in one of our study centres. Then use our always-on virtual classroom to progress your learning and work through assignments whenever and wherever it suits you. This leaves you free to work, look after your family or let your social life flourish!

**It's a modern, engaging way to learn that lets you balance learning with the other priorities in your life.**



## Our study centres

When you become a student at one of our study centres in Birmingham, Manchester or London, you will have the best of both worlds: a flexible combination of online learning plus part-time face-to-face teaching.

For undergraduate degrees, you only need to commit to two days at the study centre. If you're studying a degree with foundation year, you'll start with three days a week face-to-face. For our postgraduate courses, you only need to attend one evening session every two weeks.

You can fit your studies around your other commitments, plus receive:

- Classes led by experienced and well-qualified academic tutors
- Classroom sessions to develop your understanding and apply your learning
- 24/7 access to your online materials and resources
- Contact tutors or student support outside of class via phone, email or skype.

\*Only available in the UK.

# OUR STUDY CENTRES

Each study centre provides a purpose-built environment for you to attend classes, carry out independent study and relax with friends in between.

## Facilities:

- High-speed WiFi connection
- Computer suites and printers
- Large breakout areas
- Convenient locations with great transport links.

## LONDON

Arden has three London study centres, all in fantastic locations – Ealing, Tower Hill and Holborn.



### Ealing

Just a 7-minute walk from Ealing Broadway tube station, this new modern centre boasts great transport links, impressive facilities and a warm, friendly atmosphere.



### Tower Hill

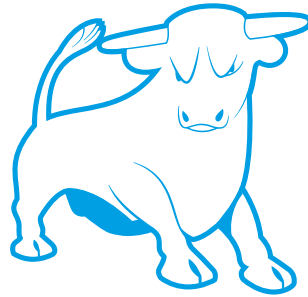
Our Sceptre Court study centre is just a 2-minute walk away from Tower Hill underground – the perfect location for anyone studying a career-focused degree or MBA.



### Holborn

Our location at 30 Holborn is in the heart of the city, right next to Chancery Lane. With plenty of restaurants, cafés and businesses on your doorstep, you won't be short of things to do here!

Call our **London** course advisors today on **0208 819 0100**.



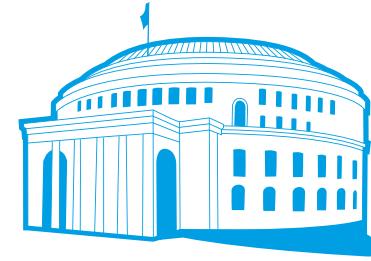
## BIRMINGHAM

Our central Birmingham study centre at Centre City Tower sits within a fantastic location and is just a short walk from New Street station.

It's a feature of the city skyline with great transport links, and on the doorstep of all the city has to offer.



Call our **Birmingham** team to discuss your options today on **0121 314 0684**.



## MANCHESTER

Linley House is a spacious and modern building in the commercial core of the city.

Located near St Peter's Square, with Oxford Road and Manchester Piccadilly stations within 10 minutes walking distance, you will be connected to the heart of a busy city and thriving student population.



Call our **Manchester** team to discuss your options today on **0161 820 3893**.



The background of the image shows a group of students walking along a paved path in a campus setting. There are trees and a building in the background. Overlaid on the image are several black silhouettes of birds in flight, scattered across the upper and right portions of the frame. The text is centered and reads:

# **WHAT OUR BLENDED LEARNING STUDENTS SAY**

---

**“Blended learning allows me the option to work part-time as well as study full-time. The compact hours allow me to work on the days that I need to go to work, as well as give me the days needed to study. I believe this will help my career a lot more than simply studying full-time.”**

Ediz Ali, LLB (Hons) QLD student

---



---

**“I was stuck in a nine-to-five job, at the peak of where I could be and I wanted to progress. Studying a blended learning course meant that I could balance my university work, get a part-time job, and earn while I learned.”**

Connor Maw, BA (Hons) Business student

---



---

**“Blended learning is ideal for me as a single parent – when I’m not at university, I’m a mum. I like that I can use ilearn within the comforts of my own home to catch up with anything I’ve missed. I’m enjoying learning, and every time I come into the study centre, I’m going away having learned something new. It’s making me believe in myself, that I can achieve my goals and it can help me move forward and get a career”**

Jade Reid, BA (Hons) Business with Foundation Year

---

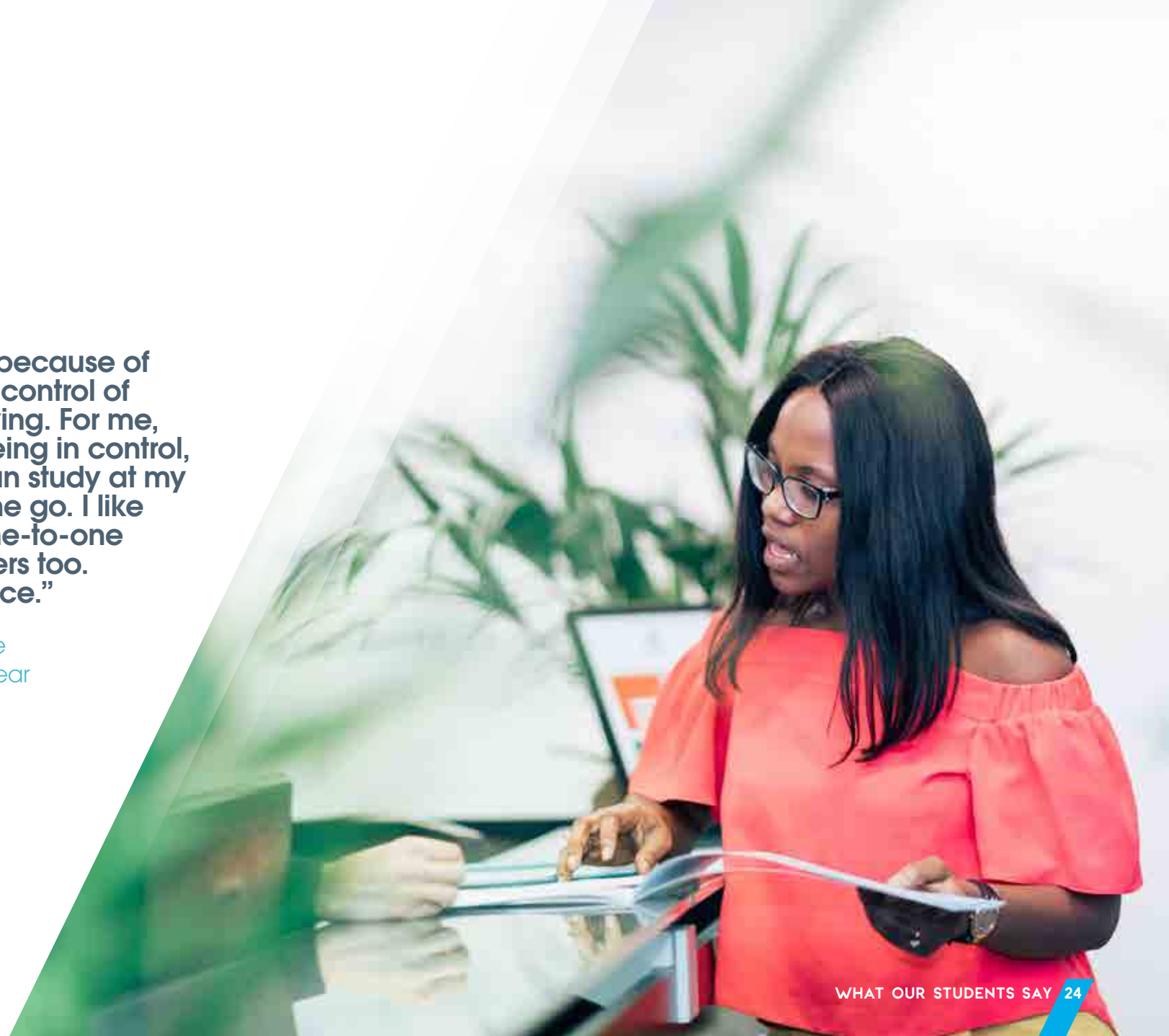


---

**“I chose Arden University because of the flexibility – it gives me control of my learning and my studying. For me, blended learning is me being in control, and I like the fact that I can study at my own pace and study on the go. I like the fact that I get more one-to-one interaction with the lecturers too. It’s a great work-life balance.”**

Tina Parnell, BA (Hons) Healthcare Management with Foundation Year

---





# YOUR COURSE ESSENTIALS



# ENTRY REQUIREMENTS

## Undergraduate

To be eligible for our undergraduate courses you will need either:

- Two subjects at A level or equivalent, plus passes at grade C or above in three subjects at GCSE level or equivalent; or
- A recognised, completed, Access Programme or equivalent.
- If you do not have the necessary qualifications, we will consider work experience - see page 27.

For students whose prior learning was not taught in English:

- IELTS 6.0 or equivalent

## Postgraduate

To be eligible for our postgraduate courses you must normally have:

- A UK honours degree at a minimum of second class (2.2) or equivalent.

For students whose prior learning was not taught in English:

- IELTS 6.5 or equivalent

Please refer to individual courses for specific entry requirements.

**If you don't have the standard qualifications, keep reading...**







• We offer degrees, Masters and MBAs in a range of subjects. As they're delivered either 100% online or via blended learning, you can fit your studies around your current commitments.

### Do you have work experience but not the qualifications?

We are more than happy to consider, and positively encourage, an application from you if you have relevant work experience and can show us that you have the motivation to study the programme.

For our postgraduate courses, we ask for substantial management experience (typically 5 years).

We'll ask you for a personal statement that demonstrates your ability to study the course. We may also want references and evidence of relevant experience.

# THE APPLICATION PROCESS

## FIND YOUR PERFECT COURSE

Arden University offers a range of courses, from undergraduate degrees to postgraduate level courses.



Begin your application by completing an online form, this is the first step in the application process and requires some key information. Once submitted, our team can begin to assess whether the course is right for you.

## YOUR ONE-TO-ONE CHAT

This can take place via a phone call, Skype or face-to-face meeting at one of our study centres. This is really a 'getting-to-know-you' chat, we can explain the course and how you will learn in more detail and gather all the necessary information to support your application.

## PROCESSING YOUR APPLICATION

Your submitted application form will be sent through to your personal admissions advisor, you should receive a call or email from them in the next 48 hours. Together, you will discuss your application in more detail. If everything feels right, you will move to the next step.

## OFFER, ACCEPTANCE AND GO!

Once complete with supporting documents, your application will be considered and a decision will be made by our academic team. Your personal admissions advisor will be in contact as soon as possible to update you on the outcome of your application.

## ENROL ON YOUR COURSE

Once you have accepted your offer, we will process your enrolment, this includes helping you set up your tuition fee payment. As part of your welcome, you'll complete an online induction of **ilearn**.



# HOW TO APPLY

Interested in applying?

Once you're ready to apply you can make your application in a variety of ways.

ONLINE



Complete your application form online at [www.arden.ac.uk](http://www.arden.ac.uk)

DOWNLOAD



Download the application – [www.arden.ac.uk](http://www.arden.ac.uk)

UCAS



Through UCAS at [www.ucas.com](http://www.ucas.com)  
Search for Arden University or R25

If you want to know a little more, have questions or just want to chat to the team before applying please contact us:

Call 0800 268 7737  
or +44 (0) 2476 515 700

Email [enquiries@arden.ac.uk](mailto:enquiries@arden.ac.uk)  
for **Distance Learning**  
or [contactus@arden.ac.uk](mailto:contactus@arden.ac.uk)  
for **Blended Learning**

Visit [www.arden.ac.uk](http://www.arden.ac.uk)

# THE FINANCIAL BITS

## Fees

We believe costs shouldn't be a barrier to personal development which is why our degrees cost much less than the average UK qualification.

If you are looking for a smart, value for money option then look no further - you can stay in control of your finance and focus on your learning.

Find your course fees online at [www.arden.ac.uk](http://www.arden.ac.uk).

## Funding options

All our students can choose to pay for their course in full, in instalments or through employer sponsorship.



## Pay in full

You can pay for your course all in one go if you have the funds. There is a 10% discount off the total price if you pay this way.

## Instalments and pay-as-you-go

You can pay for your studies as you go along. That means no monthly payment obligations; you simply make the next payment when you are ready to start the next stage of your course, paying in bitesize chunks.

We accept credit and debit cards (Visa, Mastercard and UK Maestro), bank transfers and cheques. If you have a UK current account, you can also pay with the Barclays Pingit mobile phone application. Students can also pay via PayPal if they are paying in GBP.

## Employer sponsorship

A lot of our students are fully or part-sponsored by their employer. Feedback from existing sponsors suggests it's a great return on investment and is smart choice for both employees and employers.

We have put together a useful employer sponsorship PDF guide which you can use to discuss funding directly with your employer. You can find the guide at [www.arden.ac.uk](http://www.arden.ac.uk) or contact our admissions team on 0800 268 7737 or +44 (0) 2476 515 700.

There's also a variety of other ways to receive funding for your course, such as Future Finance. You can find further details of eligibility requirements, interest rates and other key terms of the loan at [www.arden.futurefinance.com](http://www.arden.futurefinance.com).

## Distance Learning UK Fees

### Degree

Pay as you go: £1,500  
x9 instalments.

Pay in full:

**£12,825**

### MBA

Pay as you go: £1,250  
x6 instalments,  
plus £3,450  
dissertation.

Pay in full:

**£9,855**

### Masters

Pay as you go: £975  
x6 instalments,  
plus £3,650  
dissertation.

Pay in full:

**£8,550**

## Blended Learning UK Fees

### Degree

3 year degree  
total: £18,000  
4 year degree  
total: £24,000  
Fee per year:

**£6,000**

### MBA

Pay as you go: £1,250  
x6 instalments,  
plus £3,450  
dissertation.

Pay in full:

**£9,855**

### Masters

Pay as you go: £975  
x6 instalments,  
plus £3,650  
dissertation.

Pay in full:

**£8,550**

## UK students

Many UK & EU students choose to pay for study with a Student Loan. You won't be asked to pay anything back until April, four years after the start of your qualification. Student Finance England pays your fees which you pay back in small monthly instalments, once you are earning over £25,000. More information can be found at [www.gov.uk/student-finance/overview](http://www.gov.uk/student-finance/overview).

While you are applying for your Arden University course, your admissions advisor will discuss payment options with you. If you decide a student loan is the best option, you can apply online via Student Finance England. This will take about 15 minutes and you should have your passport and National Insurance number to hand. It can take as long as six weeks for the Student Loans Company to finalise applications, so make sure you do it in plenty of time to start your course.

These are fees for UK residents, please go online for more info on non-UK.

# QUESTION TIME

## CAN I DO IT?

### Will I find the course really difficult?

A university qualification is designed to challenge you and you will have to work hard to achieve your goal. However our admissions team will make sure you don't enrol on a course that is the wrong level for you and your student support co-ordinator will help you stay on track. If you start your course and don't feel it's right for you, we're happy to discuss your options. And don't forget our 30 day money back guarantee for that extra peace of mind.

### How will Arden support me?

We pride ourselves on the level of personalised support we offer our students. Your expert tutors will help prepare you for the academic challenge but also for your future career. Your student support co-ordinator will be on the other end of the phone or email for support too.

### Will I succeed?

We have helped over 50,000 people to succeed for over 25 years. Studying for a university qualification online is a big

commitment, but with the teaching and support we give you, there's no reason why you can't reach your goal. Read some of the testimonials from our past students at [www.arden.ac.uk](http://www.arden.ac.uk).

### Will there be anyone else like me on the course?

Likely! We have about 8,000 students from over 150 countries. 76% of students doing a UK university qualification through Arden University are adult learners. We've got students from diverse backgrounds, but with the same aim of getting a UK university qualification and transforming their life and career.

### I work full-time and have a family. Can I still study?

Online and blended study is all about flexibility. We believe everybody should have access to Higher Education, no matter what your circumstance is. With so many ways to access your learning resources, be it by laptop, phone or tablet, you can fit study around your life.

## HOW WILL I LEARN?

### How does flexible learning work?

Your university is open 24 hours a day, 7 days a week! The qualification at the end is the same as any other UK university course. We provide you with all the study materials you need, a team of expert tutors and other support to get you through. Learn more about the learning experience at [www.arden.ac.uk](http://www.arden.ac.uk).

### What is blended learning?

This new way of learning provides the best of face-to-face and online learning for UK students. You attend regular classroom sessions at a study centre with other students and the rest of the time you access materials and resources such as tutorials, lessons and exercises online, working at your own pace. You upload coursework and assignments to a secure online zone with easy access to a tutor via Skype, email, webchat or phone.



Our blended learning model enables you to complete a full three-year degree with just two days face-to-face commitment per week, or three days for four-year degrees. Postgraduates are required to attend just one evening session every fortnight.

### **Do I need a computer?**

Yes, for online learning you'll need a device with internet connection to access and download learning materials. This can be anything from a laptop, mobile, tablet or computer. Blended learning students will have access to computer facilities in their study centres too.

### **What study materials do I get?**

Your learning materials are produced by subject specialists and have been developed with your future career in mind – so you'll not only get the theory to help you pass exams, but also real-life practical examples to make things easier to understand and to help you later thrive in the workplace. As well as access

to your modules in ilearn, you will also find discussion forums and live chat, study schedules and an online library and EBESCO (an online research database) to help your studies.

### **How can I contact my tutor?**

Tutors often use forums on ilearn to give general feedback, which all students can benefit from, plus you can contact them outside of class via phone or email with any questions you may have.

### **Are there any classroom lectures and will I meet my tutor face-to-face?**

Only our blended courses at our UK study centres have face-to-face sessions. All of our other courses are online learning where you will interact with your tutor via live tutorials or web chat, email and skype.

### **What if I don't live in the UK?**

No problem, we have students from all over the world. Please note, you will not be eligible to apply for a visa to study in the UK with Arden. Some courses require you to sit formal exams,

but we can arrange a local venue if you're not in the UK. If English isn't your first language, you'll have to provide evidence that you can speak it to the required level.

If you've already started your studies with an internationally recognised institution, you might be able to transfer credits or receive exemptions for your module.

To find out more, call our admissions team on +44 (0) 2476 515 700 or 0800 268 7737.

## **THE PRACTICAL BITS**

### **Will I get a student card?**

Yes you will be issued with an Arden student card and you can apply for an NUS extra card if you wish.

### **Is there a graduation day?**

Yes you will be invited to attend a graduation ceremony.

**Continued overleaf** 

## EXAMS AND QUALIFICATIONS



### How long does it take to complete my qualification?

You can access modules at a pace that is convenient for you. Once you have accessed a module, there are specific maximum and minimum completion times that you will need to finish the module within. Our blended learning undergraduate degrees typically take three years to complete, or four years with foundation. For more information, please call our admissions team on 0800 268 7737 or +44 (0) 2476 515 700.

### Are the qualifications recognised internationally?

Yes. Arden University is an internationally recognised UK university.

### Will I have exams?

Some online courses are assessed online. Otherwise students sit their exams at a recognised higher education institution.

### What if I fail something?

Don't worry, if you fail an assessment, you're usually allowed to submit it again at least one more time. Your tutor will give you detailed feedback so you can prepare properly.

## FUNDING



### Do I have to pay for everything upfront?

No, we have lots of flexible payment options. You can pay as you go, apply for a student loan or get employer funding. Speak to our admissions team for all the options. Call: 0800 268 7737 or +44 (0) 2476 515 700 or email: [enquiries@arden.ac.uk](mailto:enquiries@arden.ac.uk)

### How do I pay?

You can pay online or call us. We accept credit and debit cards (Visa, Mastercard and UK Maestro), bank transfers and cheques. Currently we are unable to accept Amex cards for payment. If you have a UK current account, you can

also pay with the Barclays Pingit mobile phone application. Students can also pay via PayPal if they are paying in GBP. Many of our courses are also eligible for student loan funding. Our admissions team can tell you more.

### Is there a charge when making a bank transfer from outside the UK?

There usually is. We need to receive your payment in full, so please talk to your bank about this. They can tell you how much the charge is and make sure we get the full amount.

## CAREERS



### Do I have to pay for the careers service?

No. At Arden we believe that your learning and your career go hand-in-hand, so this is why we provide this service alongside your studies. If career advancement is high on your agenda we want to support you.





Arden House  
Middlemarch Park  
Coventry CV3 4FJ  
Call: 0800 268 7737 or  
+44 (0) 2476 515 700  
[enquiries@arden.ac.uk](mailto:enquiries@arden.ac.uk)  
[www.arden.ac.uk](http://www.arden.ac.uk)  
f ArdenUniversity  
t @Arden\_Uni

